



FOUNDATION TEST GROUP, Inc.

Incorporated in 2002, Foundation Test Group, Inc. is a certified WBE engineering and testing firm. We specialize in deep foundation design and inspection, deep foundation load testing, instrumentation and integrity testing services.

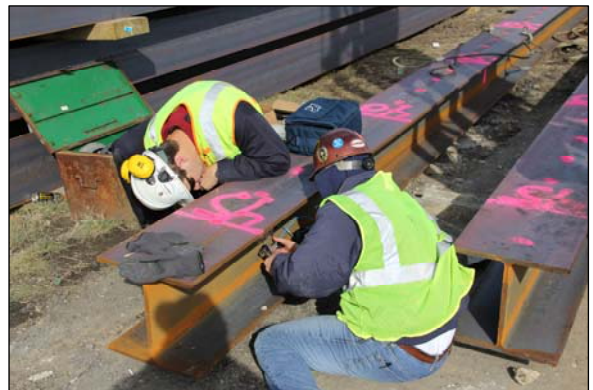
Axial Load Testing



Lateral Load Testing



Dynamic Load Testing



For more information contact **Jeff Goodwin, P.E.**
jgoodwin@foundationtestgroup.com or call Jeff at **443-463-3173**



Partial List of Static Axial Load Testing Experience ASTM D1143:

- **Creative Concepts Group, Bryan Neumann 410-760-7216**
 - Blossom Point Antenna Site, Waldorf, Maryland - 2012, 2 load tests
 - Arlington National Cemetery, Arlington, Virginia – 2012, 2 tests
 - LaPlata WWTP, LaPlata, Maryland – 2011, 1 test
 - YP Boat Basin, Annapolis, Maryland – 2011, 1 test
 - P1 Parking Garage, Baltimore, Maryland – 2011, 1 test
 - Snow Hill WWTP, Snow Hill, Maryland – 2011, 1 test
 - Frederick Community College Parking Garage, Frederick, Maryland – 2011, 2 tests
 - Hampstead Hill Elementary School, Baltimore, Maryland – 2011 -2011, 1 test
 - Joppatown WWTP – ENR, Joppatown, Maryland 2012, 1 test
 - McDonogh Road Water Line, Owings Mills, Maryland, 2012, 1 test
 - Potomac WTP, Potomac, Maryland 2012, 1 test
 - Milton WWTP, Milton, Pennsylvania, 2013, 5 tests
 - DCWATER Poplar Point, Washington, DC, 2013, 1 load test
 - Shannon Place, Washington DC, 2013, 1 load test
 - Lehigh Cement Plant, Allentown, Pennsylvania, 2014, 4 load tests
 - Martinsburg VA Hospital, Martinsburg, West Virginia, 1 load test
 - 625 H Street, Washington, DC, 2014, 1 load test
 - DelDOT Bridge, Wilmington, DE, 2014, 4 load tests
 - Dulles Metrorail, Washington, DC, 2013-2014, 32 load tests
 - Jemicy School, Hunt Valley, Maryland, 2014, 1 load test
 - St. Mary's College, St. Mary's, Maryland, 2014, 2 load tests
 - Roosevelt HS, Washington, DC, 2014, 2 load tests
 - National Label, Lafayette Hill, Pennsylvania, 2014, 2 load tests
- **McKinney Drilling Company, Harold Gathers, 540-459-9529**
 - Kohls Department Store, State College, Pennsylvania 2009 2 load tests
 - IBM Facility, Poughkeepsie, New York, 2009, 1 load test
 - Gowanus Facility, Brooklyn, New York, 2010, 1 load test
 - Rapid Rail, Cleveland, Ohio, 2010, 1 load test
- **Whitman Reqrudt Associates, Monica Paylor 443-224-1571**
 - Canton Viaduct, Baltimore, Maryland 2010, 4 tests
- **Dulles Transit Partners, Lloyd Young, 571 839-5488**
 - Dulles Metro Rail, Falls Church, Virginia 2008-2010, 7 tests
- **Atlantic Caisson, Jeff Hanbury, 717-235-6858**
 - Blossom Point Antenna Site, Waldorf, Maryland - 2013, 2 load tests
- **J. Vinton Schaefer, Joe Bailey**
 - CCBC STEM Building, Catonsville, Maryland, 2013, 1 test
- **Brayman Construction, Sally Glockel**
 - Elm Street Bridge, Roanoke, Virginia 2013, 1 test
- **Buterick Piles, Paul Buterick**
 - Bayhead Yacht Club, Bayhead, New Jersey 2013, 1 test



- **Level Lift, Inc. Phil Shied, 301-674-5860**
 Brewers Hill, Baltimore, Maryland, 2012 1 test
 UMES, Princess Anne, Maryland, 2010 1 test
 USNA Lejeune Hall, Annapolis, Maryland 2009, 2 tests
 St. Marys College, Maryland, 2007, 1 test
 Serve-Pro, Baltimore, Maryland, 2010, 1 test
 Pleasure Cove, Maryland, 2010, 2 tests
 Mercy Hospital, Baltimore, Maryland 2009, 1 test
 Hull Street Garage, Baltimore, Maryland 2011, 1 test
 Heritage Mazda, Reisterstown, Maryland 2011, 1 test
 Future Care, Baltimore, Maryland 2010 1 test
 Ft Meade, Maryland 2009 4 tests
 Days Valley Station, Baltimore, Maryland, 2008
 Aberdeen Proving Grounds, Aberdeen, Maryland 2007, 2 tests
 Clarksburg Elementary School, Clarksburg, Maryland, 2013, 1 load test
 NASA Goddard, Greenbelt, Maryland, 2014, 1 load test
 UMCP Tawes Building, College Park, Maryland, 2014, 2 load tests
 Bill Kidd's Addition, Baltimore, Maryland, 2014, 1 load test

Partial List of Static Lateral Load Testing Experience ASTM D3966:

- **Illini Drilled Foundations, Eric Reuther 217-442-8765**
 Coffeen Power Plant, Coffeen, Illinois – 2004, 1 lateral load test
- **Case Foundation, Matt Klanica 610-353-0600**
 Hudson Yards, New York, New York, 2012 2 lateral load tests
 Vogtle Nuclear Power Plant, Waynesboro, Georgia, 2011, 4 lateral load tests
 Blue Plains WWTP, Washington, DC, 2012, 2 lateral load tests
 Oakwood Beach, New York, NY, 2011, 2 lateral load tests
 Goldman Sachs HQ, New York, NY, 2006, 1 lateral load test
 Ridgehill, Yonkers, NY, 2008, 1 lateral load test
- **Creative Concepts Group, Bryan Neumann 410-760-7216**
 Shannon Place, Washington DC - 2013, 2 lateral load tests
 Dulles Metrorail, Arlington, Virginia – 2013, 8 lateral load tests
- **McKinney Drilling Company, Harold Gathers, 540-459-9529**
 Garden State Parkwaym Union, NJ 2009 2 lateral load tests
 Rt 46 Bridge, Dover, NJ 2009, 1 lateral load test
- **Level Lift, Inc. Phil Shied, 301-674-5860**
 Pleasure Cove, Maryland, 2010, 1 lateral load test
- **Whitman Reurdt Associates, Monica Paylor 443-224-1571**
 Canton Viaduct, Baltimore, Maryland 2010, 3 lateral load tests
- **Dulles Transit Partners, Lloyd Young, 571 839-5488**
 Dulles Metro Rail, Falls Church, Virginia 2008-2010, 1 lateral load test
- **Buterick Piles, Paul Buterick**
 Bayhead Yacht Club, Bayhead, New Jersey 2013, 1 test

